



**RECORD OF TITLE
UNDER LAND TRANSFER ACT 2017
UNIT TITLE
Search Copy**




R. W. Muir
Registrar-General
of Land

Identifier **579454**
Land Registration District **Wellington**
Date Issued 23 March 2012

Prior References
39317 39343

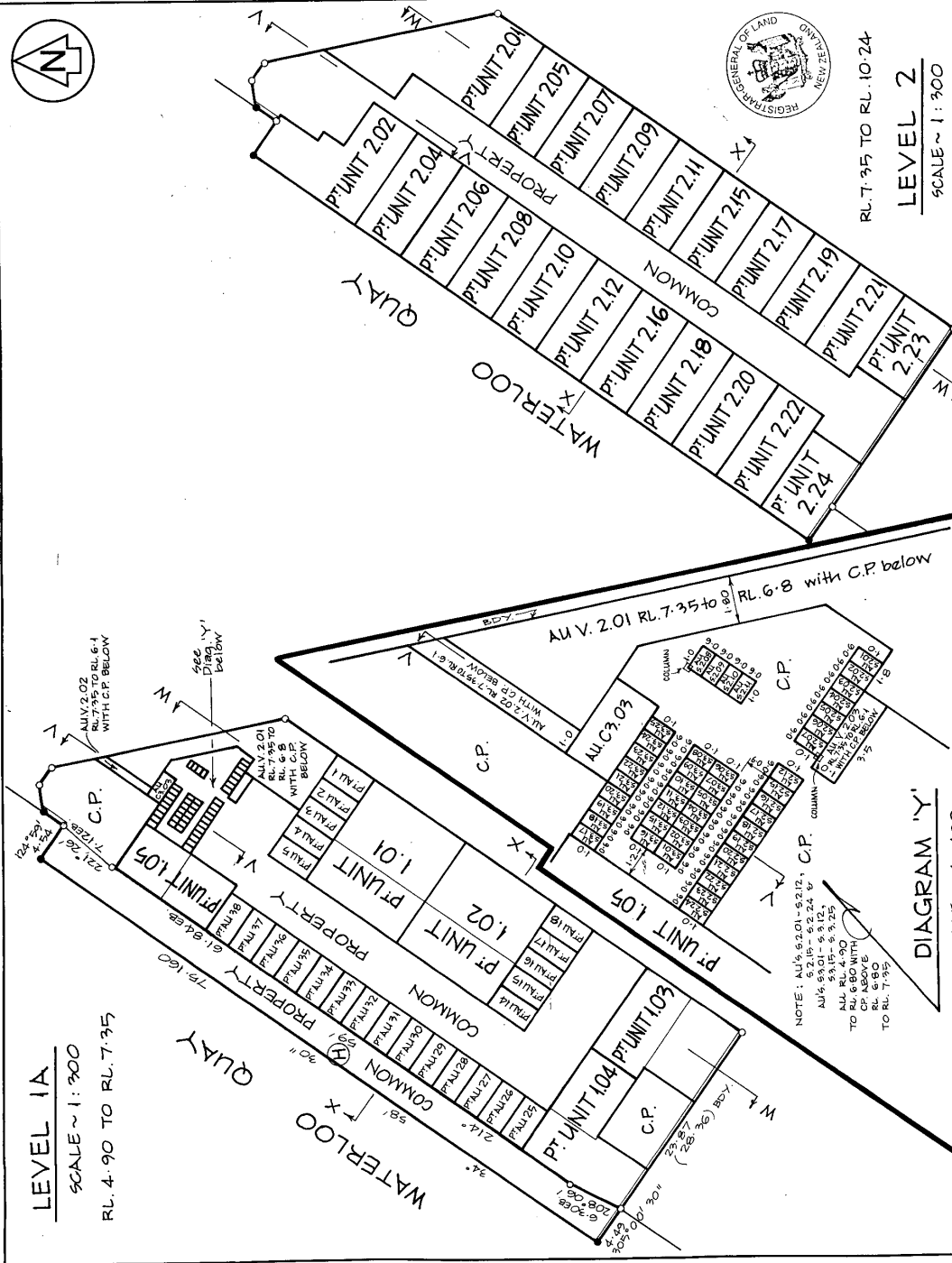
Supplementary Record Sheet
53778

Estate Stratum in Leasehold
Legal Description Unit 1.03 and Accessory Unit C3.03
Deposited Plan 309984

Registered Owners
Stephen Alan Rowe

The above estates are subject to the reservations, restrictions, encumbrances, liens and interests noted below and on the relevant unit plan and supplementary record sheet

Approvals SHEET 2 OF 5 SHEETS



LEVEL 1A

SCALE ~ 1:300

RL. 4.90 TO RL. 7.35

DIAGRAM 'Y'

SCALE ~ 1:100

RL. 7.35 TO RL. 10.24

LEVEL 2

SCALE ~ 1:300

Total Area 2066 m²

Compressed in

Karen Elizabeth Gregory

being a person entitled to practice as a registered surveyor under the Survey Act 1980 and the Survey Regulations 1980.

(a) The surveys to which this consent relates are accurate, and were undertaken by me or under my supervision in accordance with the Survey Act 1980 and the Survey Regulations 1980.

(b) The consent is accurate and has been created in accordance with the Act and the Regulations.

Signed: [Signature] Date: 11/16/2002

Field Book: [Blank] Interest Book: [Blank]

Reference Plans: SEE SHEET 1

Examined: [Blank] Correct: [Blank]

Approved as to Survey: [Signature]

23/6/2002 Approving Surveyor

Deposited this 23rd day of August 2002

[Signature] Registrar-General of Land

File 00-117 DP 309984

Received: 26/07/02

RECORDED

SHT. 2 OF 5 SHTS.

TERRITORIAL AUTHORITY: WELLINGTON CITY
Surveyed by: WYNNIE PATTERSON McLEOD
Scale 1:300 ± 1:100 Date: JUNE 2002

UNITS ON
LOT 101 DP 65083 & SEC. 1 SO 35726
AND RIGHT OF WAY OVER COMMON PROPERTY

LAND DISTRICT: WELLINGTON
Survey Blk. & Dist. V11 PORT NICHOLSON
NZMS 261 Sheet [Blank] Record Map No. [Blank]

Approvals SHEET 3 OF 5 SHEETS

Total Area 20666 m²

Comprised in

I, Karen Elizabeth Gregory
 being a person entitled to practise as a registered surveyor certify that
 (a) The surveys to which this plan relates are accurate, and were undertaken by
 me or under my direction in accordance with the Survey Act 1986 and the
 Survey Regulations 1986.
 (b) The boundaries and areas have been created in accordance with the Act and
 the Regulations.

Signer [Signature] Date 11/6/2002
 Field Book [Blank] Towns Book [Blank]
 Reference Plans SEE SHEET 1
 Examined [Blank] Corred [Blank]

Approved as to Survey
23/6/2002
[Signature]
 Registrar General of Land

Deposited this 23rd day of August 2002
[Signature]

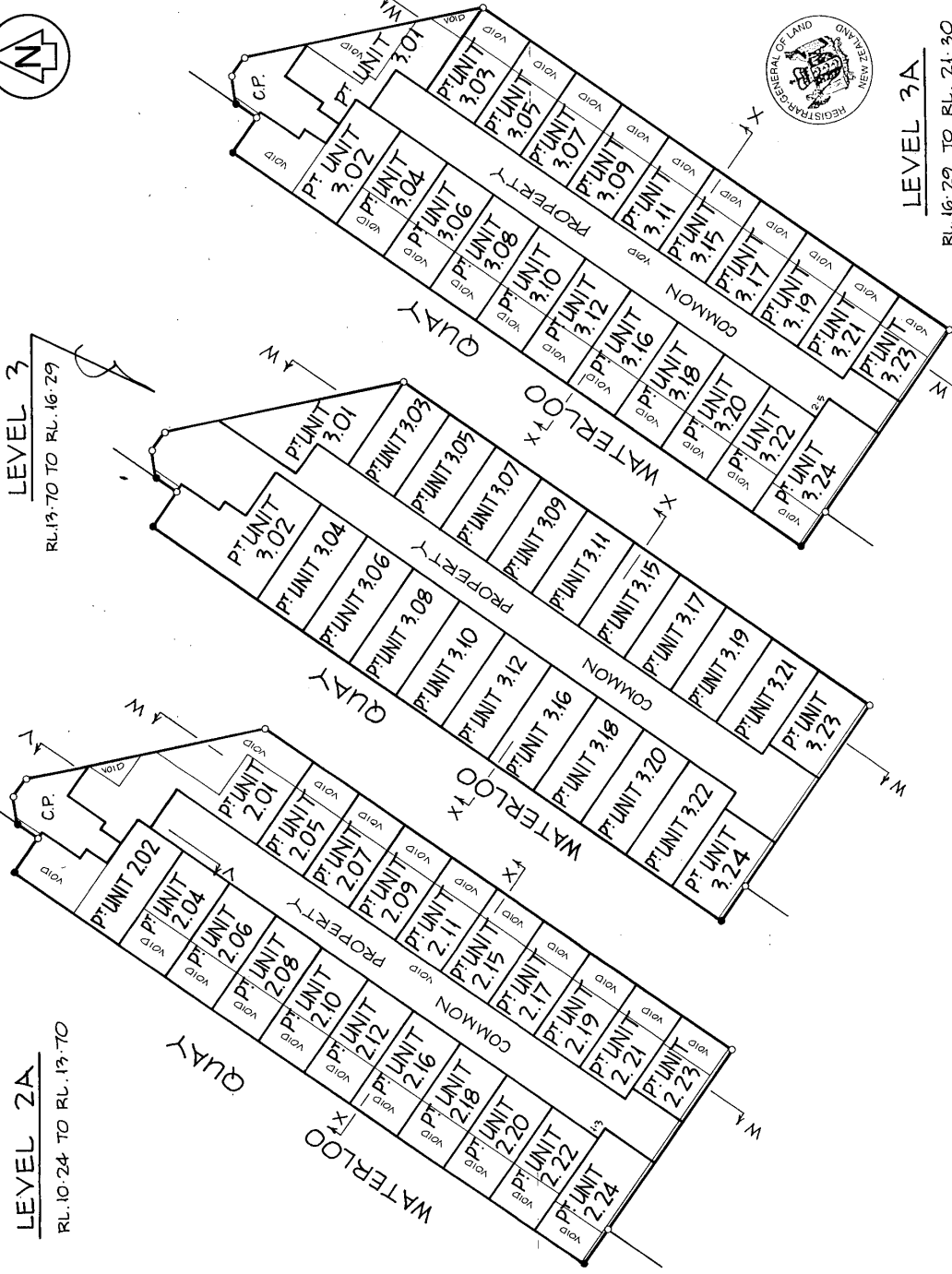
File 00-117
 Received 26/07/02
 DP 309984

WITNESSED AND SIGNED
 SHT. 3 OF 5 SHTS.



LEVEL 3
 RL.19.70 TO RL.16.29

LEVEL 2A
 RL.10.24 TO RL.19.70



LEVEL 3A
 RL.16.29 TO RL.21.90

TERRITORIAL AUTHORITY WELLINGTON CITY
 Surveyed by WYNNE PATERSON McLEOD
 Scale 1: 300 Date JUNE 2002

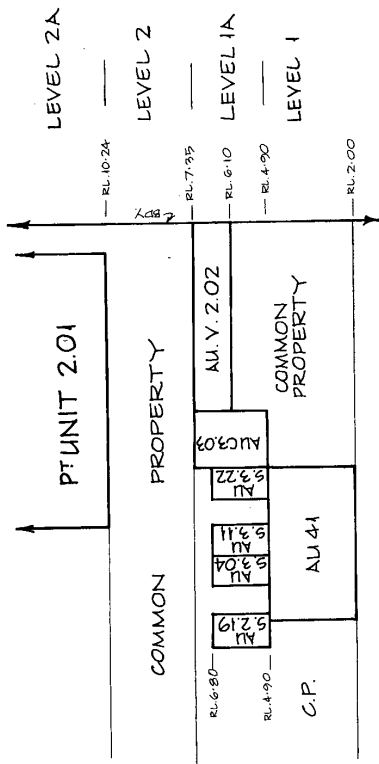
UNITS ON
 LOT 101 DP.65083 & SEC.1 SO.35726
 AND RIGHT OF WAY OVER COMMON PROPERTY

LAND DISTRICT WELLINGTON
 Survey Blk & Dist. V11 PORT NICHOLSON
 NZMS 261 Sheet [Blank] Record Map No. [Blank]

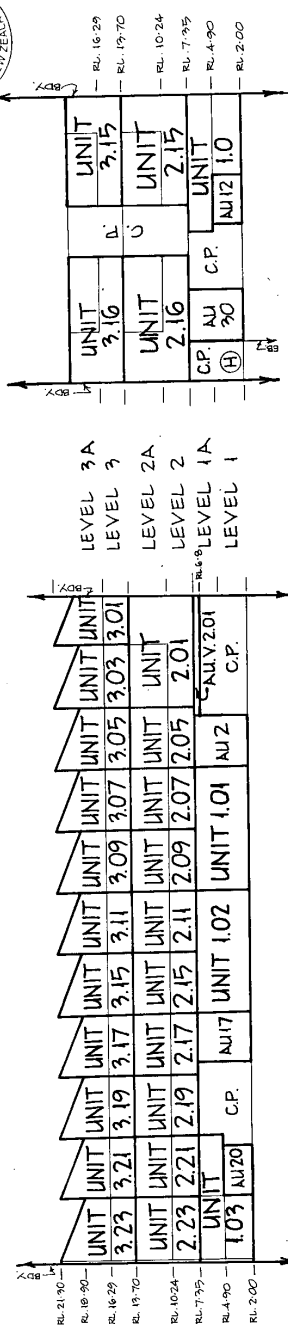
ALL BOUNDARY SURVEYS FOR GENERAL LAND INFORMATION, NEW ZEALAND

REC. 833914

Approvals SHEET 4 OF 5 SHEETS



SECTION V-Y
SCALE ~ 1:100



SECTION W-W
SCALE ~ 1:300

SECTION X-X
SCALE ~ 1:300

LAND DISTRICT WELLINGTON
Survey Blk & Dist VII PORT NICHOLSON
NZMS 261 Sheet _____ Record Map No. _____

UNITS ON
LOT 101 DP 65083 & SEC. 1 SO. 35726
AND RIGHT OF WAY OVER COMMON PROPERTY

TERRITORIAL AUTHORITY WELLINGTON CITY
Surveyed by WYNNE PATERSON M'LEOD
Scale 1:300 & 1:100 Date JUNE 2002

DP 309984
File 00-117
Received 26.07.02
Residence

Approved as to Survey
23/8/2002 (Approving Surveyor)
Deposited this 23rd day of August 2002
Sgt. Registrar General of Land

Total Area 2006 m²
Comprised in _____

I, Karen Elizabeth Gregory,
being a person entitled to practise as a registered surveyor certify that:
(a) The surveys to which this consent relates are accurate, and were undertaken by me or under my direction in accordance with the Survey Act 1986 and the Rules made thereunder;
(b) The consent is accurate and has been created in accordance with that Act and those Regulations.
Signed _____ Date 11/6/2002

Field Book _____ Traverse Book _____
Reference Plans SEE SHEET 1
Examined _____ Correct _____

Mc \$384

Approx 5 OF 5 SHEETS



C.T. ALLOCATED	APPELLATION	UNIT EMBLEMENTS	HEIGHT LIMITS		C.T. ALLOCATED	APPELLATION	UNIT EMBLEMENTS	HEIGHT LIMITS		C.T. ALLOCATED	APPELLATION	UNIT EMBLEMENTS	HEIGHT LIMITS	
			UPPER	LOWER				UPPER	LOWER				UPPER	LOWER
39315	UNIT 1.01	1108	7.95	2.00	126	AU 18	126	7.95	2.00	126	AU 18	126	7.95	2.00
39316	UNIT 1.02	1108	7.95	2.00	126	AU 19	126	4.90	2.00	126	AU 19	126	4.90	2.00
39317	UNIT 1.03	982	7.95	2.00	126	AU 20	126	4.90	2.00	126	AU 20	126	4.90	2.00
39318	UNIT 1.04	891	7.95	2.00	126	AU 21	126	4.90	2.00	126	AU 21	126	4.90	2.00
39319	UNIT 1.05	579	7.95	2.00	126	AU 22	126	4.90	2.00	126	AU 22	126	4.90	2.00
39320	UNIT 2.01	6482	19.70	7.95	126	AU 23	126	4.90	2.00	126	AU 23	126	4.90	2.00
39321	UNIT 2.02	3132	19.70	7.95	126	AU 24	126	4.90	2.00	126	AU 24	126	4.90	2.00
39322	UNIT 2.04	1747	19.70	7.95	126	AU 25	126	7.95	2.00	126	AU 25	126	7.95	2.00
39323	UNIT 2.05	2125	19.70	7.95	126	AU 26	126	7.95	2.00	126	AU 26	126	7.95	2.00
39324	UNIT 2.06	1722	19.70	7.95	126	AU 27	126	7.95	2.00	126	AU 27	126	7.95	2.00
39325	UNIT 2.07	2125	19.70	7.95	126	AU 28	126	7.95	2.00	126	AU 28	126	7.95	2.00
39326	UNIT 2.08	1697	19.70	7.95	126	AU 29	126	7.95	2.00	126	AU 29	126	7.95	2.00
39327	UNIT 2.09	1621	19.70	7.95	126	AU 30	126	7.95	2.00	126	AU 30	126	7.95	2.00
39328	UNIT 2.10	1621	19.70	7.95	126	AU 31	126	7.95	2.00	126	AU 31	126	7.95	2.00
39329	UNIT 2.11	1621	19.70	7.95	126	AU 32	126	7.95	2.00	126	AU 32	126	7.95	2.00
39330	UNIT 2.12	1621	19.70	7.95	126	AU 33	126	7.95	2.00	126	AU 33	126	7.95	2.00
39331	UNIT 2.16	1577	19.70	7.95	126	AU 34	126	7.95	2.00	126	AU 34	126	7.95	2.00
39332	UNIT 2.17	1577	19.70	7.95	126	AU 35	126	7.95	2.00	126	AU 35	126	7.95	2.00
39333	UNIT 2.18	1521	19.70	7.95	126	AU 36	126	7.95	2.00	126	AU 36	126	7.95	2.00
39334	UNIT 2.19	1521	19.70	7.95	126	AU 37	126	7.95	2.00	126	AU 37	126	7.95	2.00
39335	UNIT 2.20	1470	19.70	7.95	126	AU 38	126	7.95	2.00	126	AU 38	126	7.95	2.00
39336	UNIT 2.21	2125	19.70	7.95	126	AU 39	126	4.90	2.00	126	AU 39	126	4.90	2.00
39337	UNIT 2.22	1470	19.70	7.95	126	AU 40	126	4.90	2.00	126	AU 40	126	4.90	2.00
39338	UNIT 2.23	1949	19.70	7.95	126	AU 41	126	4.90	2.00	126	AU 41	126	4.90	2.00
39339	UNIT 2.24	1798	19.70	7.95	126	AU 42	126	4.90	2.00	126	AU 42	126	4.90	2.00
39340	UNIT 3.01	3812	21.90	19.70	126	AU 43	126	4.90	2.00	126	AU 43	126	4.90	2.00
39341	UNIT 3.02	3258	21.90	19.70	126	AU 44	126	4.90	2.00	126	AU 44	126	4.90	2.00
39342	UNIT 3.03	2085	21.90	19.70	126	AU 52.01	126	6.80	4.90	126	AU 52.01	126	6.80	4.90
39343	UNIT 3.04	1747	21.90	19.70	126	AU 52.02	126	6.80	4.90	126	AU 52.02	126	6.80	4.90
39344	UNIT 3.05	2125	21.90	19.70	126	AU 52.03	126	6.80	4.90	126	AU 52.03	126	6.80	4.90
39345	UNIT 3.06	1722	21.90	19.70	126	AU 52.04	126	6.80	4.90	126	AU 52.04	126	6.80	4.90
39346	UNIT 3.07	1621	21.90	19.70	126	AU 52.05	126	6.80	4.90	126	AU 52.05	126	6.80	4.90
39347	UNIT 3.08	1621	21.90	19.70	126	AU 52.06	126	6.80	4.90	126	AU 52.06	126	6.80	4.90
39348	UNIT 3.09	1621	21.90	19.70	126	AU 52.07	126	6.80	4.90	126	AU 52.07	126	6.80	4.90
39349	UNIT 3.10	1621	21.90	19.70	126	AU 52.08	126	6.80	4.90	126	AU 52.08	126	6.80	4.90
39350	UNIT 3.11	2025	21.90	19.70	126	AU 52.09	126	6.80	4.90	126	AU 52.09	126	6.80	4.90
39351	UNIT 3.12	1926	21.90	19.70	126	AU 52.10	126	6.80	4.90	126	AU 52.10	126	6.80	4.90
39352	UNIT 3.13	1926	21.90	19.70	126	AU 52.11	126	6.80	4.90	126	AU 52.11	126	6.80	4.90
39353	UNIT 3.14	1574	21.90	19.70	126	AU 52.12	126	6.80	4.90	126	AU 52.12	126	6.80	4.90
39354	UNIT 3.15	1574	21.90	19.70	126	AU 52.13	126	6.80	4.90	126	AU 52.13	126	6.80	4.90
39355	UNIT 3.17	2125	21.90	19.70	126	AU 52.14	126	6.80	4.90	126	AU 52.14	126	6.80	4.90
39356	UNIT 3.18	1921	21.90	19.70	126	AU 52.15	126	6.80	4.90	126	AU 52.15	126	6.80	4.90
39357	UNIT 3.19	2125	21.90	19.70	126	AU 52.16	126	6.80	4.90	126	AU 52.16	126	6.80	4.90
39358	UNIT 3.20	1470	21.90	19.70	126	AU 52.17	126	6.80	4.90	126	AU 52.17	126	6.80	4.90
39359	UNIT 3.21	1470	21.90	19.70	126	AU 52.18	126	6.80	4.90	126	AU 52.18	126	6.80	4.90
39360	UNIT 3.22	1470	21.90	19.70	126	AU 52.19	126	6.80	4.90	126	AU 52.19	126	6.80	4.90
39361	UNIT 3.23	1949	21.90	19.70	126	AU 52.20	126	6.80	4.90	126	AU 52.20	126	6.80	4.90
39362	UNIT 3.24	1798	21.90	19.70	126	AU 52.21	126	6.80	4.90	126	AU 52.21	126	6.80	4.90
39363	UNIT 3.24	1798	21.90	19.70	126	AU 52.22	126	6.80	4.90	126	AU 52.22	126	6.80	4.90
39364	UNIT 3.24	1798	21.90	19.70	126	AU 52.23	126	6.80	4.90	126	AU 52.23	126	6.80	4.90
39365	UNIT 3.24	1798	21.90	19.70	126	AU 52.24	126	6.80	4.90	126	AU 52.24	126	6.80	4.90
39366	UNIT 3.24	1798	21.90	19.70	126	AU 52.25	126	6.80	4.90	126	AU 52.25	126	6.80	4.90
39367	UNIT 3.24	1798	21.90	19.70	126	AU 52.26	126	6.80	4.90	126	AU 52.26	126	6.80	4.90
39368	UNIT 3.24	1798	21.90	19.70	126	AU 52.27	126	6.80	4.90	126	AU 52.27	126	6.80	4.90
39369	UNIT 3.24	1798	21.90	19.70	126	AU 52.28	126	6.80	4.90	126	AU 52.28	126	6.80	4.90
39370	UNIT 3.24	1798	21.90	19.70	126	AU 52.29	126	6.80	4.90	126	AU 52.29	126	6.80	4.90
39371	UNIT 3.24	1798	21.90	19.70	126	AU 52.30	126	6.80	4.90	126	AU 52.30	126	6.80	4.90
39372	UNIT 3.24	1798	21.90	19.70	126	AU 52.31	126	6.80	4.90	126	AU 52.31	126	6.80	4.90
39373	UNIT 3.24	1798	21.90	19.70	126	AU 52.32	126	6.80	4.90	126	AU 52.32	126	6.80	4.90
39374	UNIT 3.24	1798	21.90	19.70	126	AU 52.33	126	6.80	4.90	126	AU 52.33	126	6.80	4.90
39375	UNIT 3.24	1798	21.90	19.70	126	AU 52.34	126	6.80	4.90	126	AU 52.34	126	6.80	4.90
39376	UNIT 3.24	1798	21.90	19.70	126	AU 52.35	126	6.80	4.90	126	AU 52.35	126	6.80	4.90
39377	UNIT 3.24	1798	21.90	19.70	126	AU 52.36	126	6.80	4.90	126	AU 52.36	126	6.80	4.90
39378	UNIT 3.24	1798	21.90	19.70	126	AU 52.37	126	6.80	4.90	126	AU 52.37	126	6.80	4.90
39379	UNIT 3.24	1798	21.90	19.70	126	AU 52.38	126	6.80	4.90	126	AU 52.38	126	6.80	4.90
39380	UNIT 3.24	1798	21.90	19.70	126	AU 52.39	126	6.80	4.90	126	AU 52.39	126	6.80	4.90
39381	UNIT 3.24	1798	21.90	19.70	126	AU 52.40	126	6.80	4.90	126	AU 52.40	126	6.80	4.90
39382	UNIT 3.24	1798	21.90	19.70	126	AU 52.41	126	6.80	4.90	126	AU 52.41	126	6.80	4.90
39383	UNIT 3.24	1798	21.90	19.70	126	AU 52.42	126	6.80	4.90	126	AU 52.42	126	6.80	4.90
39384	UNIT 3.24	1798	21.90	19.70	126	AU 52.43	126	6.80	4.90	126	AU 52.43	126	6.80	4.90
39385	UNIT 3.24	1798	21.90	19.70	126	AU 52.44	126	6.80	4.90	126	AU 52.44	126	6.80	4.90
39386	UNIT 3.24	1798	21.90	19.70	126	AU 52.45	126	6.80	4.90	126	AU 52.45	126	6.80	4.90
39387	UNIT 3.24	1798	21.90	19.70	126	AU 52.46	126	6.80	4.90	126	AU 52.46	126	6.80	4.90
39388	UNIT 3.24	1798	21.90	19.70	126	AU 52.47	126	6.80	4.90	126	AU 52.47	126	6.80	4.90
39389	UNIT 3.24	1798	21.90	19.70	126	AU 52.48	126	6.80	4.90	126	AU 52.48	126	6.80	4.90
39390	UNIT 3.24	1798	21.90	19.70	126	AU 52.49	126	6.80	4.90	126	AU 52.49	126	6.80	4.90
39391	UNIT 3.24	1798	21.90	19.70	126	AU 52.50	126	6.80	4.90	126	AU 52.50	126	6.80	4.90
39392	UNIT 3.24	1798	21.90	19.70	126	AU 52.51	126	6.80	4.90	126	AU 52.51	126	6.80	4.90
39393	UNIT 3.24	1798	21.90	19.70	126	AU 52.52	126	6.80	4.90	126	AU 52.52	126	6.80	4.90
39394	UNIT 3.24	1798	21.90	19.70	126	AU 52.53	126	6.80	4.90	126	AU 52.53	126	6.80	4.90
39395	UNIT 3.24	1798	21.90	19.70	126	AU 52.54	126	6.80	4.90	126	AU 52.54	126	6.80	4.90
39396	UNIT 3.24	1798	21.90	19.70	126	AU 52.55	126	6.80	4.90	126	AU 52.55	126	6.80	4.90
39397	UNIT 3.24	1798	21.90	19.70	126	AU 52.56	126	6.80	4.90					



**SUPPLEMENTARY RECORD SHEET
UNDER UNIT TITLES ACT 1972**

Search Copy

Identifier **53778**
Land Registration District **Wellington**
Date Issued 23 August 2002
Plan Number DP 309984

Subdivision of
 Lot 101 Deposited Plan 65083 and Section 1 Survey Office Plan 35726

Prior References
 12370

Unit Titles Issued

105198	105199	39315	39316
39318	39319	39322	39323
39324	39325	39326	39327
39328	39329	39330	39331
39332	39333	39334	39336
39338	39339	39340	39341
39344	39345	39347	39348
39349	39350	39351	39353
39354	39355	39356	39357
39358	39359	39361	39362
579453	579454	64247	725237
725238	73144	73145	73146

Interests

OWNERSHIP OF COMMON PROPERTY

Pursuant to Section 47 Unit Titles Act 2010 -

(a) the body corporate owns the common property and

(b) the owners of all the units are beneficially entitled to the common property as tenants in common in shares proportional to the ownership interest (or proposed ownership interest) in respect of their respective units.

The above memorial has been added to Supplementary Record Sheets issued under the Unit Titles Act 1972 to give effect to Section 47 of the Unit Titles Act 2010.

Appurtenant hereto are rights of way created by Transfer 5297344.2 - 26.7.2002 at 9:46 am (until the termination date or sooner expiry of Lease B810070.1)

Subject to an electricity easment (in gross) over part marked G on DP 309984 in favour of (now) Vector Wellington Electricity Network Limited created by Transfer 5324535.1 - 23.8.2002 at 2:41 pm (until the termination date or sooner expiry of Lease B810070.1)

5324535.5 Change of rules of the Body Corporate - 23.8.2002 at 2:41 pm

Subject to a pedestrian right of way (restricted as to height) over part marked H on DP 309984 created by Transfer 5324535.6 - 23.8.2002 at 2:41 pm (until the termination date or sooner expiry of Lease B810070.1)

9199236.1 Notice of change of body corporate operational rules pursuant to Section 106 Unit Titles Act 2010 - 2.10.2012 at 3:08 pm

11000759.2 Surrender of the right of way over parts marked C, D, E, G, CX, CY, DA & CZ on DP 490659 created by Transfer 5297344.2 appurtenant hereto - 6.7.2018 at 1:24 pm

11501688.1 Notice of change of body corporate operational rules pursuant to Section 106 Unit Titles Act 2010 - 19.7.2019 at 1:44 pm

11914625.1 Notice of change of body corporate operational rules pursuant to Section 106 Unit Titles Act 2010 - 3.11.2020 at 11:21 am

12833814.1 Notice of change of body corporate operational rules pursuant to Section 106 Unit Titles Act 2010 - 20.9.2023 at 12:26 pm

13201460.1 Notice of change of body corporate operational rules pursuant to Section 106 Unit Titles Act 2010 - 13.1.2025 at 3:09 pm