



**SUPPLEMENTARY RECORD SHEET
UNDER UNIT TITLES ACT 1972**

Search Copy

Identifier **53778**
Land Registration District **Wellington**
Date Issued 23 August 2002
Plan Number DP 309984

Subdivision of
Lot 101 Deposited Plan 65083 and Section 1 Survey Office Plan 35726

Prior References
12370

Unit Titles Issued

| | | | |
|--------|--------|-------|--------|
| 105198 | 105199 | 39315 | 39316 |
| 39318 | 39319 | 39322 | 39323 |
| 39324 | 39325 | 39326 | 39327 |
| 39328 | 39329 | 39330 | 39331 |
| 39332 | 39333 | 39334 | 39336 |
| 39338 | 39339 | 39340 | 39341 |
| 39344 | 39345 | 39347 | 39348 |
| 39349 | 39350 | 39351 | 39353 |
| 39354 | 39355 | 39356 | 39357 |
| 39358 | 39359 | 39361 | 39362 |
| 579453 | 579454 | 64247 | 725237 |
| 725238 | 73144 | 73145 | 73146 |

Interests

OWNERSHIP OF COMMON PROPERTY

Pursuant to Section 47 Unit Titles Act 2010 -

(a) the body corporate owns the common property and

(b) the owners of all the units are beneficially entitled to the common property as tenants in common in shares proportional to the ownership interest (or proposed ownership interest) in respect of their respective units.

The above memorial has been added to Supplementary Record Sheets issued under the Unit Titles Act 1972 to give effect to Section 47 of the Unit Titles Act 2010.

Appurtenant hereto are rights of way created by Transfer 5297344.2 - 26.7.2002 at 9:46 am (until the termination date or sooner expiry of Lease B810070.1)

Subject to an electricity easment (in gross) over part marked G on DP 309984 in favour of (now) Vector Wellington Electricity Network Limited created by Transfer 5324535.1 - 23.8.2002 at 2:41 pm (until the termination date or sooner expiry of Lease B810070.1)

5324535.5 Change of rules of the Body Corporate - 23.8.2002 at 2:41 pm

Subject to a pedestrian right of way (restricted as to height) over part marked H on DP 309984 created by Transfer 5324535.6 - 23.8.2002 at 2:41 pm (until the termination date or sooner expiry of Lease B810070.1)

9199236.1 Notice of change of body corporate operational rules pursuant to Section 106 Unit Titles Act 2010 - 2.10.2012 at 3:08 pm

11000759.2 Surrender of the right of way over parts marked C, D, E, G, CX, CY, DA & CZ on DP 490659 created by Transfer 5297344.2 appurtenant hereto - 6.7.2018 at 1:24 pm

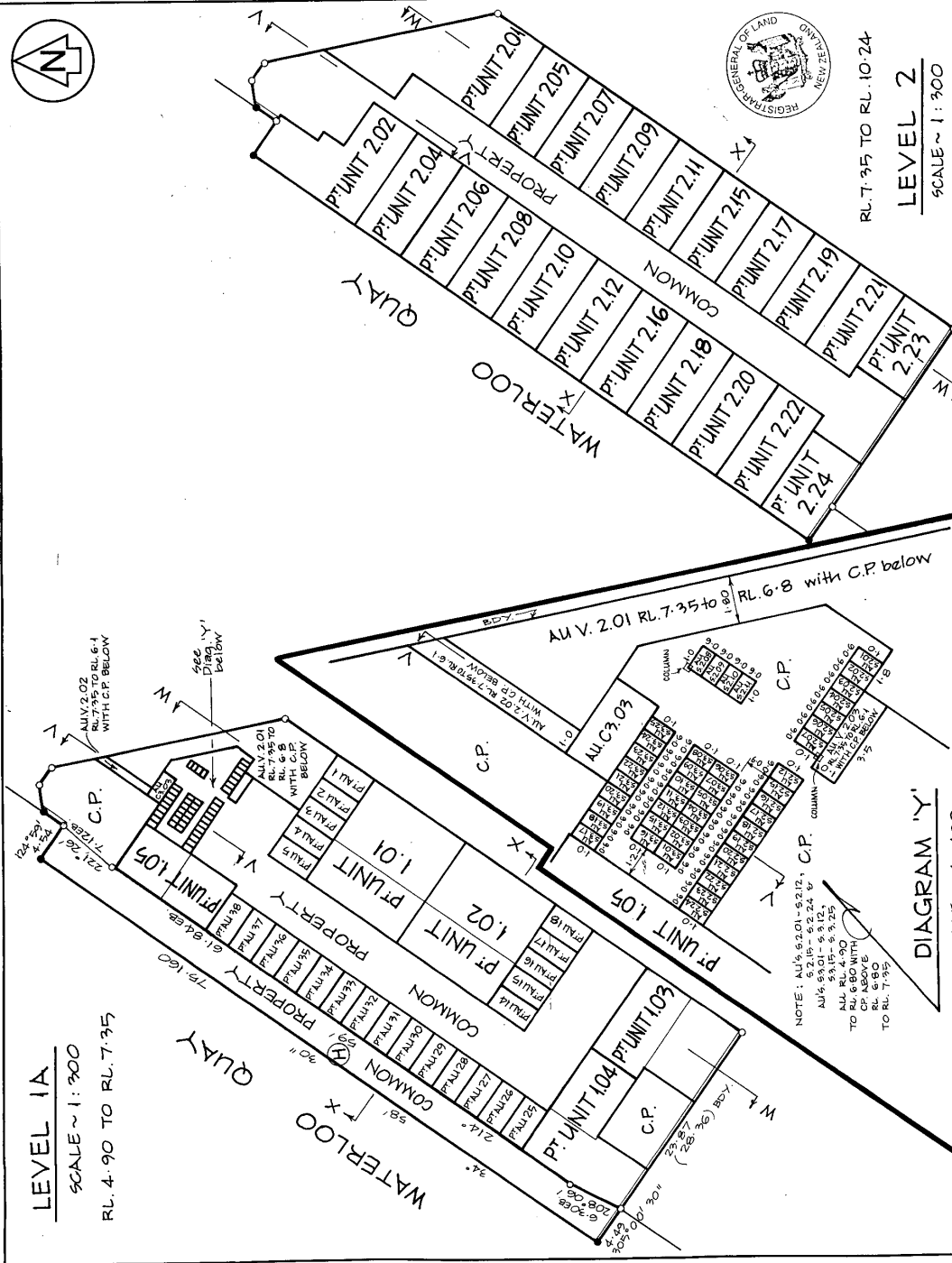
11501688.1 Notice of change of body corporate operational rules pursuant to Section 106 Unit Titles Act 2010 - 19.7.2019 at 1:44 pm

11914625.1 Notice of change of body corporate operational rules pursuant to Section 106 Unit Titles Act 2010 - 3.11.2020 at 11:21 am

12833814.1 Notice of change of body corporate operational rules pursuant to Section 106 Unit Titles Act 2010 - 20.9.2023 at 12:26 pm

13201460.1 Notice of change of body corporate operational rules pursuant to Section 106 Unit Titles Act 2010 - 13.1.2025 at 3:09 pm

Approvals SHEET 2 OF 5 SHEETS



LEVEL 1A

SCALE ~ 1:300

RL. 4.90 TO RL. 7.35

DIAGRAM 'Y'

SCALE ~ 1:100

RL. 7.35 TO RL. 10.24

LEVEL 2

SCALE ~ 1:300

Total Area 2066 m²

Composed in

Karen Elizabeth Gregory
 being a person entitled to practise as a registered surveyor hereby
 certifies that the survey to which this plan relates is accurate, and was conducted by
 her or under her supervision in accordance with the Survey Act 1980 and the
 regulations made thereunder.
 (b) The stated acreage and has been checked in accordance with that Act and
 those Regulations.

Signed Date 11/16/2002

Field Book

Reference Plans

Examined

Approved as to Survey

23/8/2002

Approved by

23rd day of August 2002

Registered General of Land

DP 309984

Received

26/07/02

SH. 2 OF 5 SH. TS.

TERRITORIAL AUTHORITY: WELLINGTON CITY
 Surveyed by WYNNE PATTERSON McLEOD
 Scale 1:300 ± 1:100 Date JUNE 2002

UNITS ON
 LOT 101 DP 65083 & SEC. 1 SO 35726
 AND RIGHT OF WAY OVER COMMON PROPERTY

LAND DISTRICT: WELLINGTON
 Survey Blk. & Dist. V11 PORT NICHOLSON
 NZMS 261 Sheet Record Map No.

Approvals SHEET 3 OF 5 SHEETS

Total Area 20666 m²

Comprised in

I, Karen Elizabeth Gregory
 being a person entitled to practise as a registered surveyor certify that
 (a) The surveys to which this plan relates are accurate, and were undertaken by
 me or under my direction in accordance with the Survey Act 1986 and the
 Survey Regulations 1986.
 (b) These regulations and have been created in accordance with the Act and
 the Survey Regulations 1986.

Signature [Signature] Date 11/6/2002

Field Book [Blank] Towns Book [Blank]

Reference Plans SEE SHEET 1

Examined [Blank] Corred [Blank]

Approved as to Survey

23/6/2002

Approving Surveyor

Deposited this 23rd day of August 2002

[Signature] Registrar General of Land

File 00-117

Received 26/07/02

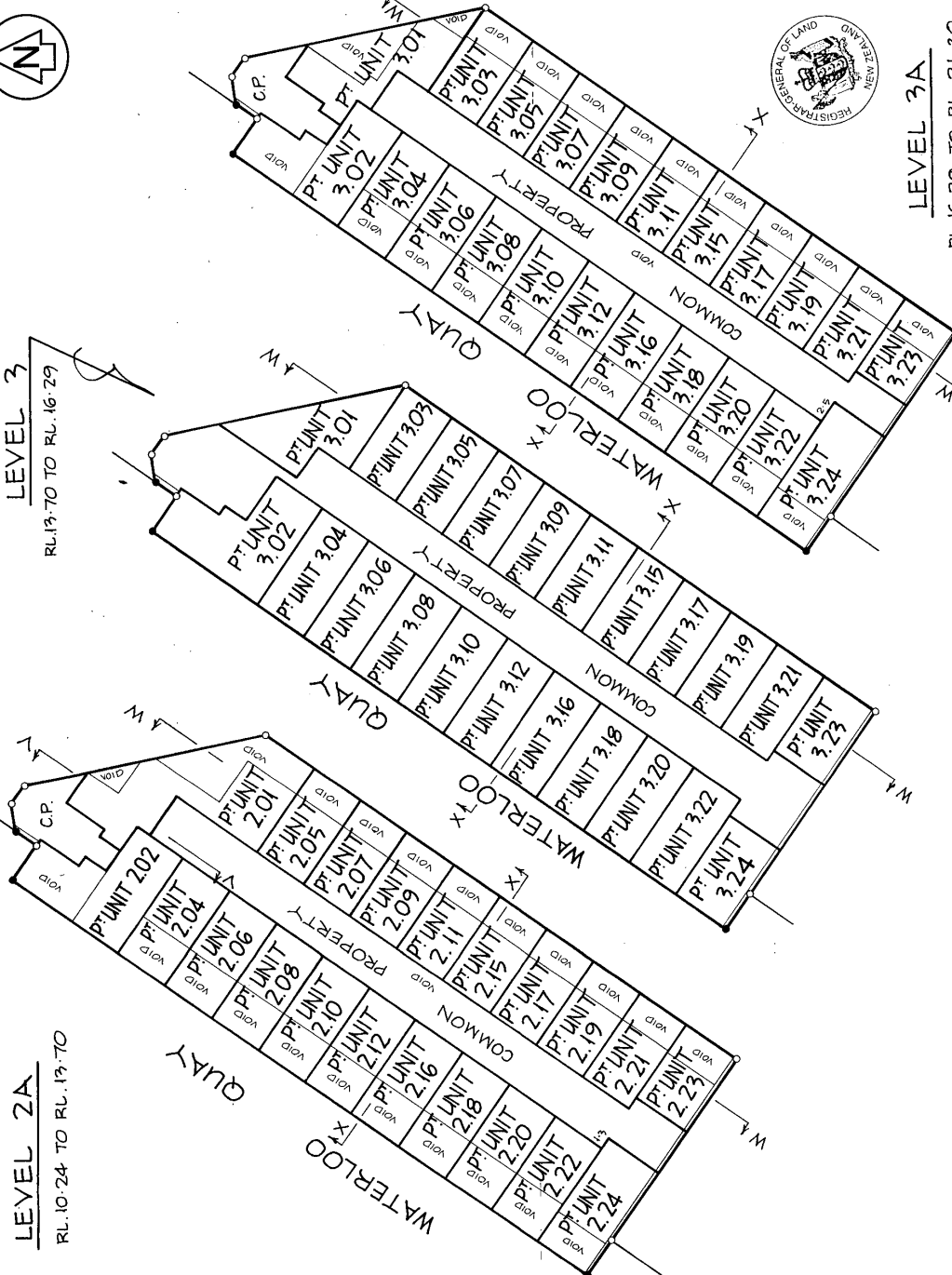
DP 309984

SHT. 3 OF 5 SHTS.



LEVEL 3
RL.19.70 TO RL.16.29

LEVEL 2A
RL.10.24 TO RL.19.70



LEVEL 3A
RL.16.29 TO RL.21.90

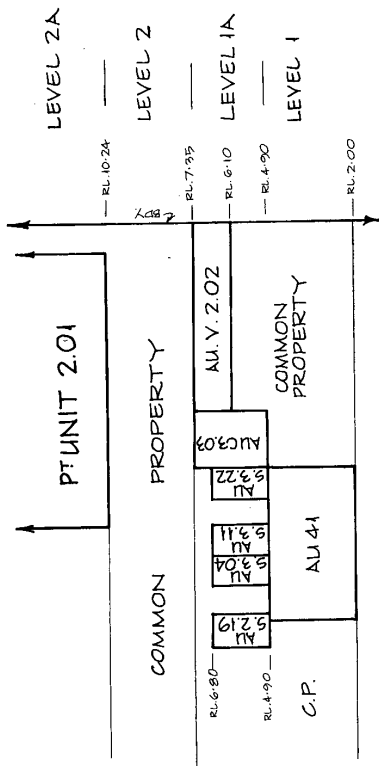
TERRITORIAL AUTHORITY WELLINGTON CITY
 Surveyed by WYNNE PATERSON McLEOD
 Scale 1: 300 Date JUNE 2002

UNITS ON
 LOT 101 DP.65083 & SEC.1 SO.35726
 AND RIGHT OF WAY OVER COMMON PROPERTY

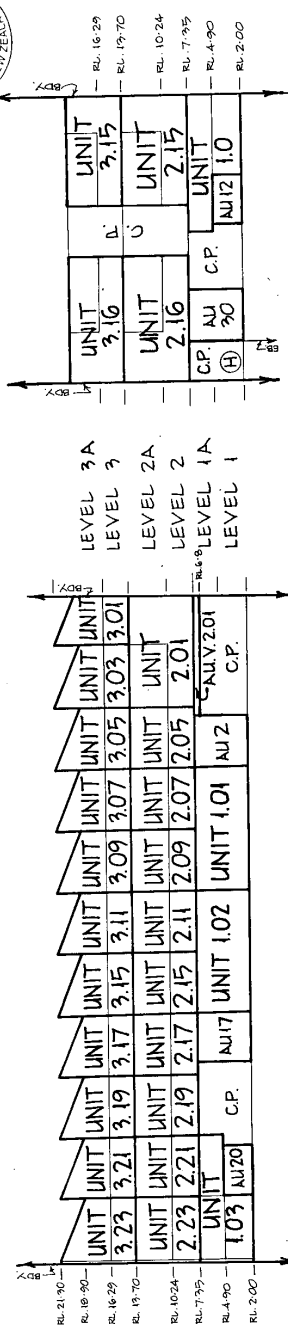
LAND DISTRICT WELLINGTON
 Survey Blk & Dist. V11 PORT NICHOLSON
 NZMS 261 Sheet [Blank] Record Map No. [Blank]

REG. 833914

Approx. SHEET 4 OF 5 SHEETS



SECTION V-Y
SCALE ~ 1:100



SECTION W-W
SCALE ~ 1:300

SECTION X-X
SCALE ~ 1:300

LAND DISTRICT WELLINGTON
Survey Blk & Dist. VII PORT NICHOLSON
NZMS 261 Sheet _____ Record Map No. _____

UNITS ON
LOT 101 DP 65083 & SEC. 1 SO. 35726
AND RIGHT OF WAY OVER COMMON PROPERTY

TERRITORIAL AUTHORITY WELLINGTON CITY
Surveyed by WYNNE PATERSON M'LEOD
Scale 1:300 & 1:100 Date JUNE 2002

Total Area 2006 m²
Comprised in _____

I, Karen Elizabeth Gregory,
being a person entitled to practise as a registered surveyor certify that:
(a) The survey to which this consent relates are accurate, and were undertaken by me or under my direction in accordance with the Survey Act 1986 and the Rules made thereunder;
(b) The consent is accurate and has been created in accordance with that Act and those Regulations.

Signed _____ Date 11/16/2002

Field Book _____ Traverse Book _____
Reference Pins SEE SHEET 1
Examined _____ Correct _____

Approved as to Survey
23/8/2002 Approving Surveyor
Deposited this 23rd day of August 2002
S. P. Registrar General of Land

File 00-117
Received 26.07.02
Residence
DP 309984

SHT. 4 OF 5 SHTS.

Approx. SHEET 5 OF 5 SHEETS



| C.T. ALLOCATED | APPELLATION | UNIT EMBLEM'S | HEIGHT LIMITS | | C.T. ALLOCATED | APPELLATION | UNIT EMBLEM'S | HEIGHT LIMITS | | C.T. ALLOCATED | APPELLATION | UNIT EMBLEM'S | HEIGHT LIMITS | |
|----------------|-------------|---------------|---------------|-------|----------------|-------------|---------------|---------------|-------|----------------|-------------|---------------|---------------|-------|
| | | | UPPER | LOWER | | | | UPPER | LOWER | | | | UPPER | LOWER |
| 39315 | UNIT 1.01 | 1108 | 7.95 | 2.00 | 126 | AU 18 | 126 | 7.95 | 2.00 | 126 | AU 18 | 126 | 7.95 | 2.00 |
| 39316 | UNIT 1.02 | 1108 | 7.95 | 2.00 | 126 | AU 19 | 126 | 4.90 | 2.00 | 126 | AU 19 | 126 | 4.90 | 2.00 |
| 39317 | UNIT 1.03 | 982 | 7.95 | 2.00 | 126 | AU 20 | 126 | 4.90 | 2.00 | 126 | AU 20 | 126 | 4.90 | 2.00 |
| 39318 | UNIT 1.04 | 891 | 7.95 | 2.00 | 126 | AU 21 | 126 | 4.90 | 2.00 | 126 | AU 21 | 126 | 4.90 | 2.00 |
| 39319 | UNIT 1.05 | 579 | 7.95 | 2.00 | 126 | AU 22 | 126 | 4.90 | 2.00 | 126 | AU 22 | 126 | 4.90 | 2.00 |
| 39320 | UNIT 2.01 | 6482 | 19.70 | 7.95 | 126 | AU 23 | 126 | 4.90 | 2.00 | 126 | AU 23 | 126 | 4.90 | 2.00 |
| 39321 | UNIT 2.02 | 3132 | 19.70 | 7.95 | 126 | AU 24 | 126 | 4.90 | 2.00 | 126 | AU 24 | 126 | 4.90 | 2.00 |
| 39322 | UNIT 2.04 | 1747 | 19.70 | 7.95 | 126 | AU 25 | 126 | 7.95 | 2.00 | 126 | AU 25 | 126 | 7.95 | 2.00 |
| 39323 | UNIT 2.05 | 2125 | 19.70 | 7.95 | 126 | AU 26 | 126 | 7.95 | 2.00 | 126 | AU 26 | 126 | 7.95 | 2.00 |
| 39324 | UNIT 2.06 | 1722 | 19.70 | 7.95 | 126 | AU 27 | 126 | 7.95 | 2.00 | 126 | AU 27 | 126 | 7.95 | 2.00 |
| 39325 | UNIT 2.07 | 1697 | 19.70 | 7.95 | 126 | AU 28 | 126 | 7.95 | 2.00 | 126 | AU 28 | 126 | 7.95 | 2.00 |
| 39326 | UNIT 2.08 | 1621 | 19.70 | 7.95 | 126 | AU 29 | 126 | 7.95 | 2.00 | 126 | AU 29 | 126 | 7.95 | 2.00 |
| 39327 | UNIT 2.09 | 1621 | 19.70 | 7.95 | 126 | AU 30 | 126 | 7.95 | 2.00 | 126 | AU 30 | 126 | 7.95 | 2.00 |
| 39328 | UNIT 2.10 | 1621 | 19.70 | 7.95 | 126 | AU 31 | 126 | 7.95 | 2.00 | 126 | AU 31 | 126 | 7.95 | 2.00 |
| 39329 | UNIT 2.11 | 1621 | 19.70 | 7.95 | 126 | AU 32 | 126 | 7.95 | 2.00 | 126 | AU 32 | 126 | 7.95 | 2.00 |
| 39330 | UNIT 2.12 | 1621 | 19.70 | 7.95 | 126 | AU 33 | 126 | 7.95 | 2.00 | 126 | AU 33 | 126 | 7.95 | 2.00 |
| 39331 | UNIT 2.13 | 1621 | 19.70 | 7.95 | 126 | AU 34 | 126 | 7.95 | 2.00 | 126 | AU 34 | 126 | 7.95 | 2.00 |
| 39332 | UNIT 2.14 | 1621 | 19.70 | 7.95 | 126 | AU 35 | 126 | 7.95 | 2.00 | 126 | AU 35 | 126 | 7.95 | 2.00 |
| 39333 | UNIT 2.15 | 1621 | 19.70 | 7.95 | 126 | AU 36 | 126 | 7.95 | 2.00 | 126 | AU 36 | 126 | 7.95 | 2.00 |
| 39334 | UNIT 2.16 | 1621 | 19.70 | 7.95 | 126 | AU 37 | 126 | 7.95 | 2.00 | 126 | AU 37 | 126 | 7.95 | 2.00 |
| 39335 | UNIT 2.17 | 1621 | 19.70 | 7.95 | 126 | AU 38 | 126 | 7.95 | 2.00 | 126 | AU 38 | 126 | 7.95 | 2.00 |
| 39336 | UNIT 2.18 | 1621 | 19.70 | 7.95 | 126 | AU 39 | 126 | 7.95 | 2.00 | 126 | AU 39 | 126 | 7.95 | 2.00 |
| 39337 | UNIT 2.19 | 1621 | 19.70 | 7.95 | 126 | AU 40 | 126 | 7.95 | 2.00 | 126 | AU 40 | 126 | 7.95 | 2.00 |
| 39338 | UNIT 2.20 | 1470 | 19.70 | 7.95 | 126 | AU 41 | 126 | 4.90 | 2.00 | 126 | AU 41 | 126 | 4.90 | 2.00 |
| 39339 | UNIT 2.21 | 2125 | 19.70 | 7.95 | 126 | AU 42 | 126 | 4.90 | 2.00 | 126 | AU 42 | 126 | 4.90 | 2.00 |
| 39340 | UNIT 2.22 | 1470 | 19.70 | 7.95 | 126 | AU 43 | 126 | 4.90 | 2.00 | 126 | AU 43 | 126 | 4.90 | 2.00 |
| 39341 | UNIT 2.23 | 1949 | 19.70 | 7.95 | 126 | AU 44 | 126 | 4.90 | 2.00 | 126 | AU 44 | 126 | 4.90 | 2.00 |
| 39342 | UNIT 2.24 | 1798 | 19.70 | 7.95 | 126 | AU 45 | 126 | 4.90 | 2.00 | 126 | AU 45 | 126 | 4.90 | 2.00 |
| 39343 | UNIT 3.01 | 3812 | 21.90 | 19.70 | 126 | AU 46 | 126 | 4.90 | 2.00 | 126 | AU 46 | 126 | 4.90 | 2.00 |
| 39344 | UNIT 3.02 | 3258 | 21.90 | 19.70 | 126 | AU 47 | 126 | 4.90 | 2.00 | 126 | AU 47 | 126 | 4.90 | 2.00 |
| 39345 | UNIT 3.03 | 2085 | 21.90 | 19.70 | 126 | AU 48 | 126 | 4.90 | 2.00 | 126 | AU 48 | 126 | 4.90 | 2.00 |
| 39346 | UNIT 3.04 | 1747 | 21.90 | 19.70 | 126 | AU 49 | 126 | 4.90 | 2.00 | 126 | AU 49 | 126 | 4.90 | 2.00 |
| 39347 | UNIT 3.05 | 2125 | 21.90 | 19.70 | 126 | AU 50 | 126 | 4.90 | 2.00 | 126 | AU 50 | 126 | 4.90 | 2.00 |
| 39348 | UNIT 3.06 | 1722 | 21.90 | 19.70 | 126 | AU 51 | 126 | 4.90 | 2.00 | 126 | AU 51 | 126 | 4.90 | 2.00 |
| 39349 | UNIT 3.07 | 1621 | 21.90 | 19.70 | 126 | AU 52 | 126 | 4.90 | 2.00 | 126 | AU 52 | 126 | 4.90 | 2.00 |
| 39350 | UNIT 3.08 | 1621 | 21.90 | 19.70 | 126 | AU 53 | 126 | 4.90 | 2.00 | 126 | AU 53 | 126 | 4.90 | 2.00 |
| 39351 | UNIT 3.09 | 1621 | 21.90 | 19.70 | 126 | AU 54 | 126 | 4.90 | 2.00 | 126 | AU 54 | 126 | 4.90 | 2.00 |
| 39352 | UNIT 3.10 | 1621 | 21.90 | 19.70 | 126 | AU 55 | 126 | 4.90 | 2.00 | 126 | AU 55 | 126 | 4.90 | 2.00 |
| 39353 | UNIT 3.11 | 2025 | 21.90 | 19.70 | 126 | AU 56 | 126 | 4.90 | 2.00 | 126 | AU 56 | 126 | 4.90 | 2.00 |
| 39354 | UNIT 3.12 | 1926 | 21.90 | 19.70 | 126 | AU 57 | 126 | 4.90 | 2.00 | 126 | AU 57 | 126 | 4.90 | 2.00 |
| 39355 | UNIT 3.13 | 1926 | 21.90 | 19.70 | 126 | AU 58 | 126 | 4.90 | 2.00 | 126 | AU 58 | 126 | 4.90 | 2.00 |
| 39356 | UNIT 3.14 | 1574 | 21.90 | 19.70 | 126 | AU 59 | 126 | 4.90 | 2.00 | 126 | AU 59 | 126 | 4.90 | 2.00 |
| 39357 | UNIT 3.15 | 1574 | 21.90 | 19.70 | 126 | AU 60 | 126 | 4.90 | 2.00 | 126 | AU 60 | 126 | 4.90 | 2.00 |
| 39358 | UNIT 3.16 | 1574 | 21.90 | 19.70 | 126 | AU 61 | 126 | 4.90 | 2.00 | 126 | AU 61 | 126 | 4.90 | 2.00 |
| 39359 | UNIT 3.17 | 2125 | 21.90 | 19.70 | 126 | AU 62 | 126 | 4.90 | 2.00 | 126 | AU 62 | 126 | 4.90 | 2.00 |
| 39360 | UNIT 3.18 | 1921 | 21.90 | 19.70 | 126 | AU 63 | 126 | 4.90 | 2.00 | 126 | AU 63 | 126 | 4.90 | 2.00 |
| 39361 | UNIT 3.19 | 1470 | 21.90 | 19.70 | 126 | AU 64 | 126 | 4.90 | 2.00 | 126 | AU 64 | 126 | 4.90 | 2.00 |
| 39362 | UNIT 3.20 | 1470 | 21.90 | 19.70 | 126 | AU 65 | 126 | 4.90 | 2.00 | 126 | AU 65 | 126 | 4.90 | 2.00 |
| 39363 | UNIT 3.21 | 2125 | 21.90 | 19.70 | 126 | AU 66 | 126 | 4.90 | 2.00 | 126 | AU 66 | 126 | 4.90 | 2.00 |
| 39364 | UNIT 3.22 | 1470 | 21.90 | 19.70 | 126 | AU 67 | 126 | 4.90 | 2.00 | 126 | AU 67 | 126 | 4.90 | 2.00 |
| 39365 | UNIT 3.23 | 1949 | 21.90 | 19.70 | 126 | AU 68 | 126 | 4.90 | 2.00 | 126 | AU 68 | 126 | 4.90 | 2.00 |
| 39366 | UNIT 3.24 | 1798 | 21.90 | 19.70 | 126 | AU 69 | 126 | 4.90 | 2.00 | 126 | AU 69 | 126 | 4.90 | 2.00 |
| 39367 | UNIT 3.25 | 1621 | 21.90 | 19.70 | 126 | AU 70 | 126 | 4.90 | 2.00 | 126 | AU 70 | 126 | 4.90 | 2.00 |
| 39368 | UNIT 3.26 | 1621 | 21.90 | 19.70 | 126 | AU 71 | 126 | 4.90 | 2.00 | 126 | AU 71 | 126 | 4.90 | 2.00 |
| 39369 | UNIT 3.27 | 1621 | 21.90 | 19.70 | 126 | AU 72 | 126 | 4.90 | 2.00 | 126 | AU 72 | 126 | 4.90 | 2.00 |
| 39370 | UNIT 3.28 | 1621 | 21.90 | 19.70 | 126 | AU 73 | 126 | 4.90 | 2.00 | 126 | AU 73 | 126 | 4.90 | 2.00 |
| 39371 | UNIT 3.29 | 1621 | 21.90 | 19.70 | 126 | AU 74 | 126 | 4.90 | 2.00 | 126 | AU 74 | 126 | 4.90 | 2.00 |
| 39372 | UNIT 3.30 | 1621 | 21.90 | 19.70 | 126 | AU 75 | 126 | 4.90 | 2.00 | 126 | AU 75 | 126 | 4.90 | 2.00 |
| 39373 | UNIT 3.31 | 2025 | 21.90 | 19.70 | 126 | AU 76 | 126 | 4.90 | 2.00 | 126 | AU 76 | 126 | 4.90 | 2.00 |
| 39374 | UNIT 3.32 | 1926 | 21.90 | 19.70 | 126 | AU 77 | 126 | 4.90 | 2.00 | 126 | AU 77 | 126 | 4.90 | 2.00 |
| 39375 | UNIT 3.33 | 1926 | 21.90 | 19.70 | 126 | AU 78 | 126 | 4.90 | 2.00 | 126 | AU 78 | 126 | 4.90 | 2.00 |
| 39376 | UNIT 3.34 | 1574 | 21.90 | 19.70 | 126 | AU 79 | 126 | 4.90 | 2.00 | 126 | AU 79 | 126 | 4.90 | 2.00 |
| 39377 | UNIT 3.35 | 1574 | 21.90 | 19.70 | 126 | AU 80 | 126 | 4.90 | 2.00 | 126 | AU 80 | 126 | 4.90 | 2.00 |
| 39378 | UNIT 3.36 | 1574 | 21.90 | 19.70 | 126 | AU 81 | 126 | 4.90 | 2.00 | 126 | AU 81 | 126 | 4.90 | 2.00 |
| 39379 | UNIT 3.37 | 2125 | 21.90 | 19.70 | 126 | AU 82 | 126 | 4.90 | 2.00 | 126 | AU 82 | 126 | 4.90 | 2.00 |
| 39380 | UNIT 3.38 | 1921 | 21.90 | 19.70 | 126 | AU 83 | 126 | 4.90 | 2.00 | 126 | AU 83 | 126 | 4.90 | 2.00 |
| 39381 | UNIT 3.39 | 1470 | 21.90 | 19.70 | 126 | AU 84 | 126 | 4.90 | 2.00 | 126 | AU 84 | 126 | 4.90 | 2.00 |
| 39382 | UNIT 3.40 | 1470 | 21.90 | 19.70 | 126 | AU 85 | 126 | 4.90 | 2.00 | 126 | AU 85 | 126 | 4.90 | 2.00 |
| 39383 | UNIT 3.41 | 2125 | 21.90 | 19.70 | 126 | AU 86 | 126 | 4.90 | 2.00 | 126 | AU 86 | 126 | 4.90 | 2.00 |
| 39384 | UNIT 3.42 | 1949 | 21.90 | 19.70 | 126 | AU 87 | 126 | 4.90 | 2.00 | 126 | AU 87 | 126 | 4.90 | 2.00 |
| 39385 | UNIT 3.43 | 1798 | 21.90 | 19.70 | 126 | AU 88 | 126 | 4.90 | 2.00 | 126 | AU 88 | 126 | 4.90 | 2.00 |
| 39386 | UNIT 3.44 | 1621 | 21.90 | 19.70 | 126 | AU 89 | 126 | 4.90 | 2.00 | 126 | AU 89 | 126 | 4.90 | 2.00 |
| 39387 | UNIT 3.45 | 1621 | 21.90 | 19.70 | 126 | AU 90 | 126 | 4.90 | 2.00 | 126 | AU 90 | 126 | 4.90 | 2.00 |
| 39388 | UNIT 3.46 | 1621 | 21.90 | 19.70 | 126 | AU 91 | 126 | 4.90 | 2.00 | 126 | AU 91 | 126 | 4.90 | 2.00 |
| 39389 | UNIT 3.47 | 1621 | 21.90 | 19.70 | 126 | AU 92 | 126 | 4.90 | 2.00 | 126 | AU 92 | 126 | 4.90 | 2.00 |
| 39390 | UNIT 3.48 | 1621 | 21.90 | 19.70 | 126 | AU 93 | 126 | 4.90 | 2.00 | 126 | AU 93 | 126 | 4.90 | 2.00 |
| 39391 | UNIT 3.49 | 1621 | 21.90 | 19.70 | 126 | AU 94 | 126 | 4.90 | 2.00 | 126 | AU 94 | 126 | 4.90 | 2.00 |
| 39392 | UNIT 3.50 | 1621 | 21.90 | 19.70 | 126 | AU 95 | 126 | 4.90 | 2.00 | 126 | AU 95 | 126 | 4.90 | 2.00 |
| 39393 | UNIT 3.51 | 1621 | 21.90 | 19.70 | 126 | AU 96 | 126 | 4.90 | 2.00 | 126 | AU 96 | 126 | 4.90 | 2.00 |
| 39394 | UNIT 3.52 | 1621 | 21.90 | 19.70 | 126 | AU 97 | 126 | 4.90 | 2.00 | 126 | AU 97 | 126 | 4.90 | 2.00 |
| 39395 | UNIT 3.53 | 1621 | 21.90 | 19.70 | 126 | AU 98 | 126 | 4.90 | 2.00 | 126 | AU 98 | 126 | 4.90 | 2.00 |
| 39396 | UNIT 3.54 | 1621 | 21.90 | 19.70 | 126 | AU 99 | 126 | 4.90 | 2.00 | 126 | AU 99 | 126 | 4.90 | 2.00 |
| 39397 | UNIT 3.55 | 1621 | 21.90 | 19.70 | 126 | AU 100 | 126 | 4.90 | 2.00 | 126 | AU 100 | 126 | 4.90 | 2.00 |

Total Unit Entitlement = 100,000
 Supplementary Record Sheet - 53778
 Address of Body Corporate ~
 Waterloo on Quay
 28 Waterloo Quay
 Wellington.

I, Timothy Michael Truebridge, of Wellington
 Registered Valuer, hereby certify that I have
 assessed the Value of the Land in the Unit Plan
 in accordance with the Land Valuation Act, 1972
 Dated this 25th day of July, 2002.
 T.M. Truebridge Registered Valuer

